

IF THE POT HAS A HOLE IN IT

SINGING WITH LYRICS



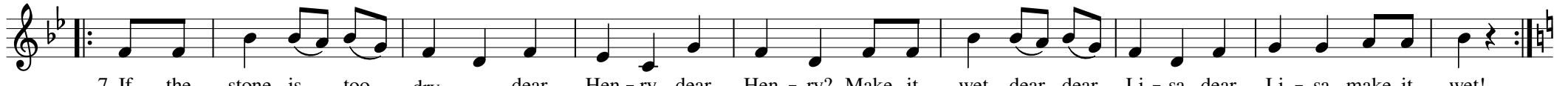
1. If the pot has a ho - le, dear Hen - ry, dear Hen - ry? Plug it, dear dear Li - sa, dear Li - sa, plug it!
2. But what should I plug it with, dear Hen - ry, dear Hen - ry? With straw, dear dear Li - sa, dear Li - sa, with straw!



3. But if the straw is too long, dear Hen - ry, dear Hen - ry? Cut it, dear dear Li - sa, dear Li - sa, cut it!
4. But what should I cut it them, daer Hen - ry, dear Hen - ry? With an axe, dear dear Li - sa, dear Li - sa, with an axe!



5. But if the axe is too blunt, dear Hen - ry, dear Hen - ry? Sharp-en it, dear dear Li - sa, dear Li - sa, sharp-en it!
6. What should I sharp-en it with, dear Hen - ry, dear Hen - ry? With a stone, dear dear Li - sa, dear Li - sa, with a stone!



7. If the stone is too dry, dear Hen - ry, dear Hen - ry? Make it wet, dear dear Li - sa, dear Li - sa, make it wet!
8. What should I make it wet with, dear Hen - ry, dear Hen - ry? With water, dear dear Li - sa, dear Li - sa, with water!



9. What should I fetch wa - ter is, dear Hen - ry, dear Hen - ry? With the pot, dear dear Li - sa, dear Li - sa, with the pot! Oh!



10. If the pot has a ho - le, dear Hen - ry, dear Hen - ry? Plug it, dear dear Li - sa, dear Li - sa, plug it!